

I-85 / I-385 Interchange Study Conceptual Utility Report

South Carolina Department of Transportation

From I-385 interchanges with Woodruff Road (SC-146 – Exit 35) and Roper Mountain Road (S-183 – Exit 37) and the I-85 Interchanges with Woodruff Road (SC-146 – Exit 50) and Pelham Road (Road S-492 – Exit 54)

Greenville County,
South Carolina



South Carolina Department of Transportation
Reconfiguration of I-385 Interchange with I-85, Conceptual Plans
Greenville County, SC

CONCEPTUAL UTILITY REPORT, (TABLE OF CONTENTS)

Executive Summary

TAB 1 - Scope of Work: I-85/I-385 Interchange Modifications – Concept Plans, Task 6 – Preliminary Utility and railroad coordination

TAB 2 - Project Information

TAB 3 – Utilities Contact List

TAB 4 – Duke Energy

TAB 5 – Charter Communications

TAB 6 – AT&T (BellSouth)

TAB 7 – City of Greenville Water System

TAB 8 – Renewable Water Resources

TAB 9 – Metropolitan Sewer District

TAB 10 – Piedmont Natural Gas

TAB 11 – Utility Not in Project Area

CONCEPTUAL UTILITY REPORT, EXECUTIVE SUMMARY

Provided here is the Preliminary Utility and Railroad Coordination Scope of Work Task 6 (TAB 1) deliverable. The project information provided to the utility owners is TAB 2. There was no requirement for the use of Subsurface Utility Engineering (SUE) to identify existing utility facilities and no utility facilities were mapped in this phase of work for conceptual plans.

The Conceptual Utility Report is organized in accordance with Task 6. Preliminary Utility Coordination deliverable paragraph 3 and is tabbed for easy reference. All utility representatives contacted for this project were very cooperative and responded to Utility Coordination requests quickly. The list of affected utilities is contained in TAB 3.

The Design Team (F&H and THE LPA GROUP) conducted a joint utility coordination meeting in conjunction with the Greenville Utility Coordination Committee monthly meeting held May 18, 2009 in Greenville, SC. F&H provided a project overview and schedule for the conceptual plans. THE LPA GROUP provided a project description and project area map for utilities to use to identify their existing facilities.

During the summer (July and August) utilities responded with contacts, no facilities in project area, and information on critical and expensive facilities that needed to be accounted for in the study of alternate reconfiguration of the interchange. During the joint utility coordination meeting each utility reviewed where their facilities were, critical items to be avoided, whether they had easement or right-of-way and future plans for replacing/upgrading/new facility. Then in coordination with the roadway designs this information was coordinated with the conceptual reconfiguration to avoid as practical as possible major / critical utility facilities. Given that I-385 and I-85 are in existing location in Full Controlled Access Right of Way and the dense urban nature of the corridor, existing utility facilities will be impacted with any additional Right of Way or easements needed.

The typical conflict with existing utilities is where realignment and or widening of the interstate or secondary road requires new Right of Way outside existing Right of Way. In general terms aerial utilities (electric, telecommunications lines) are outside existing public Right of Way and have prior rights and are reimbursable. The underground utilities (natural gas, telecommunication, water and sanitary sewer lines) are generally inside public Right of Way and will not be reimbursable.

Attention needs to be focused on the underground utilities, especially power and telecommunications, as the adjacent properties to the project area are mostly fully developed commercial and industrial complexes with large utility distribution services and interruption of those services will be extremely problematic. Aerial utilities are along the service and secondary roads with a couple of perpendicular crossings of I-85 and may need to be relocated for vertical clearance changes.

CONCEPTUAL UTILITY REPORT, EXECUTIVE SUMMARY

The only Railroad involvement is an existing industrial freight spur that I-385 crosses over along with Garlington Road. This line is owned by the industrial company on Garlington Road. There are no plans for future expansion of this spur.

This report provides the preliminary assessment of impact to each affected utility with detailed information as outlined in Task 6 in TAB 4 through TAB 10. Evaluations of the Conceptual Alternatives impacts are as follows:

ALTERNATIVE 1

1. High probability of major impacts, highest reimbursable relocation cost to SCDOT and high relocation cost to utilities
2. New location of I-85/Woodruff Road ramps impact AT&T, Charter and Piedmont Natural Gas with I-85 north bound CD lane
3. New structure over railroad freight spur, Garlington Road utilities and I-385

ALTERNATIVE 1B

1. High probability of major impacts, highest reimbursable relocation cost to SCDOT and high relocation cost to utilities
2. New location of I-85/Woodruff Road ramps impact AT&T, Charter and Piedmont Natural Gas with I-85 north bound CD lane
3. New structure over railroad freight spur, Garlington Road utilities and I-385

ALTERNATIVE 2

1. Middle probability of impacts, low reimbursable relocation cost to SCDOT and high relocation cost to utilities
2. Realignment of Independence Boulevard impacts AT&T, Charter, Piedmont Natural Gas and water distribution
3. New structure over railroad freight spur, Garlington Road utilities and I-385

ALTERNATIVE 2A

1. Low probability of impacts, low reimbursable relocation cost to SCDOT and low relocation cost to utilities
2. I-85 south bound flyover ramp to Woodruff Road over Independence Boulevard impacts AT&T, Charter, Piedmont Natural Gas and water distribution
3. New structure over railroad freight spur, Garlington Road utilities and I-385

CONCEPTUAL UTILITY REPORT, EXECUTIVE SUMMARY

ALTERNATIVE 3

1. Highest probability of major impacts, highest reimbursable relocation cost to SCDOT and highest relocation cost to utilities
2. I-85/Woodruff Road split diamond interchange and realignment of Garlington Road will have a major impact to all utilities, aerial and underground
3. New structure over railroad freight spur, Garlington Road utilities and I-385

THE LPA GROUP has greatly appreciated the opportunity to lead the Utility and Railroad Coordination effort for this important project and looks forward to providing the same quality effort in the next phase of this project. If you have questions concerning this report please contact me at 704.665.9935.

Sincerely,

Gus Kretschmer
Utility Coordination Manager

Scope of Work:

I-85/ I-385 Interchange Modifications – Concept Plans

TASK 6 – Preliminary Utility and Railroad Coordination

Preliminary Utility Coordination –The SUB-CONSULTANT will identify major utilities and Utility easements within the project limits. The SUB-CONSULTANT will initiate early coordination with these utility companies. Coordination shall include, but shall not be limited to, contacting each utility company to advise the company of the proposed project, obtaining copies of as-built plans for the existing utility facilities (if available), and determining the companies' requirements for the relocation of their facilities. The SUB-CONSULTANT will research the prior rights of each major utility company's facilities.

The SUB-CONSULTANT will consider the location of these utilities in the development of the preliminary Build Alternatives and in the formulation of cost estimates. Where conflicts are unavoidable, the SUB-CONSULTANT will make recommendations for resolution of the conflict I-385/I-85 where possible.

The SUB-CONSULTANT shall prepare and submit to the Department a Conceptual Utility Report that includes a listing of all utility companies contacted during this phase and a preliminary recommendation as to the extent of each major utility company's prior rights. This report shall also include a preliminary assessment of the impact to each company as can best be determined at the time, as well as a determination of the feasibility of early utility relocations that may begin prior to the start of construction.

Preliminary Railroad Coordination – The SUB-CONSULTANT will initiate early coordination with railway owner(s) within the project limits. Coordination will consist of contacting each the railway owner(s) to advise them of the proposed project and determining their existing and future use of the railways within the project limits.

South Carolina Department of Transportation
Reconfiguration of I-385 Interchange with I-85, Conceptual Plans
Greenville County, SC

CONCEPTUAL UTILITY REPORT, Updated

The Project consists of improvements to the I-85/I-385 Interchange in Greenville County. Modifications to this interchange impacts the adjacent interchanges in all four directions. These interchanges include the I-385 interchanges with Woodruff Road (SC-146 – Exit 35) and Roper Mountain Road (S-183 – Exit 37) and the I-85 Interchanges with Woodruff Road (SC-146 – Exit 50) and Pelham Road (Road S-492 – Exit 54). The first phase is completed and consisted of traffic analysis, alternative conceptual designs, and an overview of potential impacts of the alternatives. Information about major utilities in the area was gathered as part of this phase of work in order to identify potential major conflicts/impacts so that they can be included in the analysis of the conceptual alternatives and addressed in the cost estimates if conflicts are unavoidable.

SCDOT has decided to change the delivery method of this project from “Design/Bid/Build to “Design/Build”. With this decision, SCDOT has revised the Utility Coordination scope of work to update existing/current utility contact information and new/proposed utility facilities. Arrangements were made to contact each utility owner contact to provide an update to the Project conceptual plan, Design/Build method, Project schedule and verify utility information. On November 21, 2012 the Greenville Area Utilities Coordinating Committee held their monthly meeting and Gus Kretschmer (LPA GROUP) and Clint Link (F&H) presented Project information; verify existing contacts and existing/proposed utility facilities.

All utilities have reviewed the Project Public Hearing Exhibit and found that existing utility facilities are correct and no additions since the SUE was completed and no proposed/future facilities are planned at this time.

Attached is the updated utility owner contact list current as of November 21, 2012.

Kretschmer, Gus

From: Greg Schuch [gschuch@flohut.com]
Sent: Monday, May 18, 2009 3:01 PM
To: Kretschmer, Gus
Cc: Kicklighter, Fred; David Beaty
Subject: RE: I85 & I385 Interchange Study, exhibit
Attachments: image001.gif

Gus,

Below is a description of the project:

The project consists of improvements to the I-85/I-385 Interchange in Greenville County. Modifications to this interchange may impact the adjacent interchanges in all four directions. These interchanges include the I-385 interchanges with Woodruff Road (SC-146 – Exit 35) and Roper Mountain Road (S-183 – Exit 37) and the I-85 Interchanges with Woodruff Road (SC-146 – Exit 50) and Pelham Road (Road S-492 – Exit 54). Due to the unknown and potentially widespread impacts of this interchange reconfiguration on I-385, I-85, and the adjacent interchanges, the project is to be divided into two phases of work. The first phase is underway and will consist of traffic analysis, alternative conceptual designs, and an overview of potential impacts of the alternatives. Information about major utilities in the area is being gathered as part of this phase of work in order to identify potential major conflicts/impacts so that they can be included in the analysis of the conceptual alternatives and addressed in the cost estimates if conflicts are unavoidable.

The study area for Phase 1 will consist of segments of, I-85, I-385, and SC-146 (Woodruff Road) as well as segments of S-183 (Roper Mountain Road) and S-492 (Pelham Road) adjacent to the interchanges. The study area along I-85 will be bounded by the ramp tie-ins on the south side of the SC-146 (Woodruff Road) interchange and the ramp tie-ins on the north side of the S-492 (Pelham Road) interchange. On I-385, the study area will extend from the eastern tie-in of the ramps from the SC-146 (Woodruff Road) interchange to the western tie-in of the ramps from the S-183 (Roper Mountain Road) interchange. The SC-146 (Woodruff Road) study area will extend from its intersection with Roper Mountain Road to approximately 0.25 miles past the ramp terminals of the I-385 interchange. The study area of Roper Mountain Road and Pelham Road will generally be limited to the areas immediately adjacent to the interchange assumed to be 0.25 miles past the existing ramp terminals in both directions. The study area for Phase 1 is based primarily on the traffic analysis and potential construction activity will likely not occur throughout the entire study area.

As I mentioned to you on the phone, I will likely not be able to attend the meeting, but we will have someone from our Greenville office present to represent F&H.

Regards,

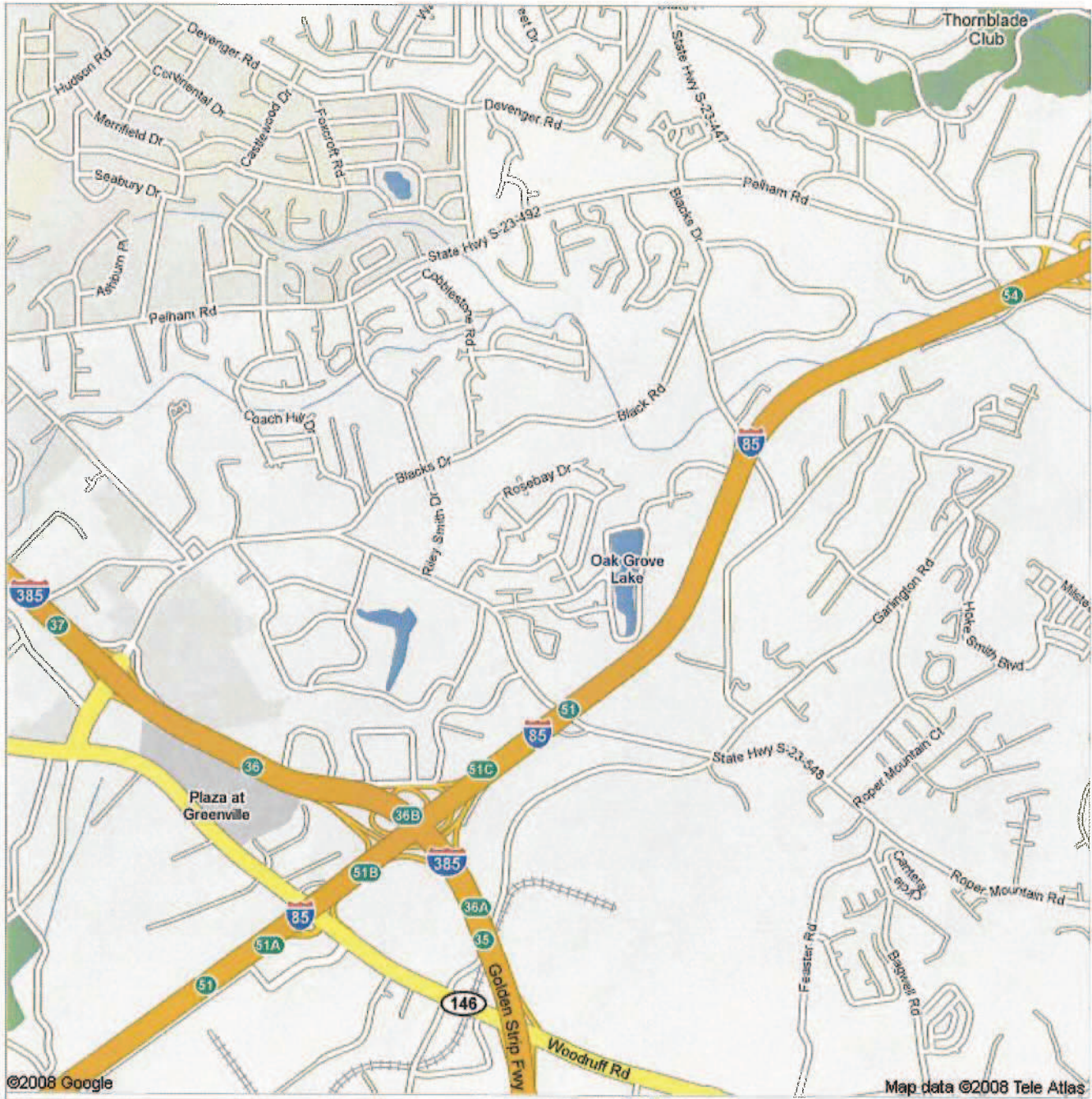
Greg M. Schuch, P.E.
Project Manager / Associate
Florence & Hutcheson, Inc.
501 Huger Street
Columbia, SC 29201
gschuch@flohut.com
ph: 803-254-5800
fax: 803-929-0334
mobile: 803-622-0146
www.flohut.com

From: Kretschmer, Gus [mailto:GKretschmer@lpagroup.com]
Sent: Friday, May 15, 2009 11:41 AM



Address **Greenville, S Carolina**

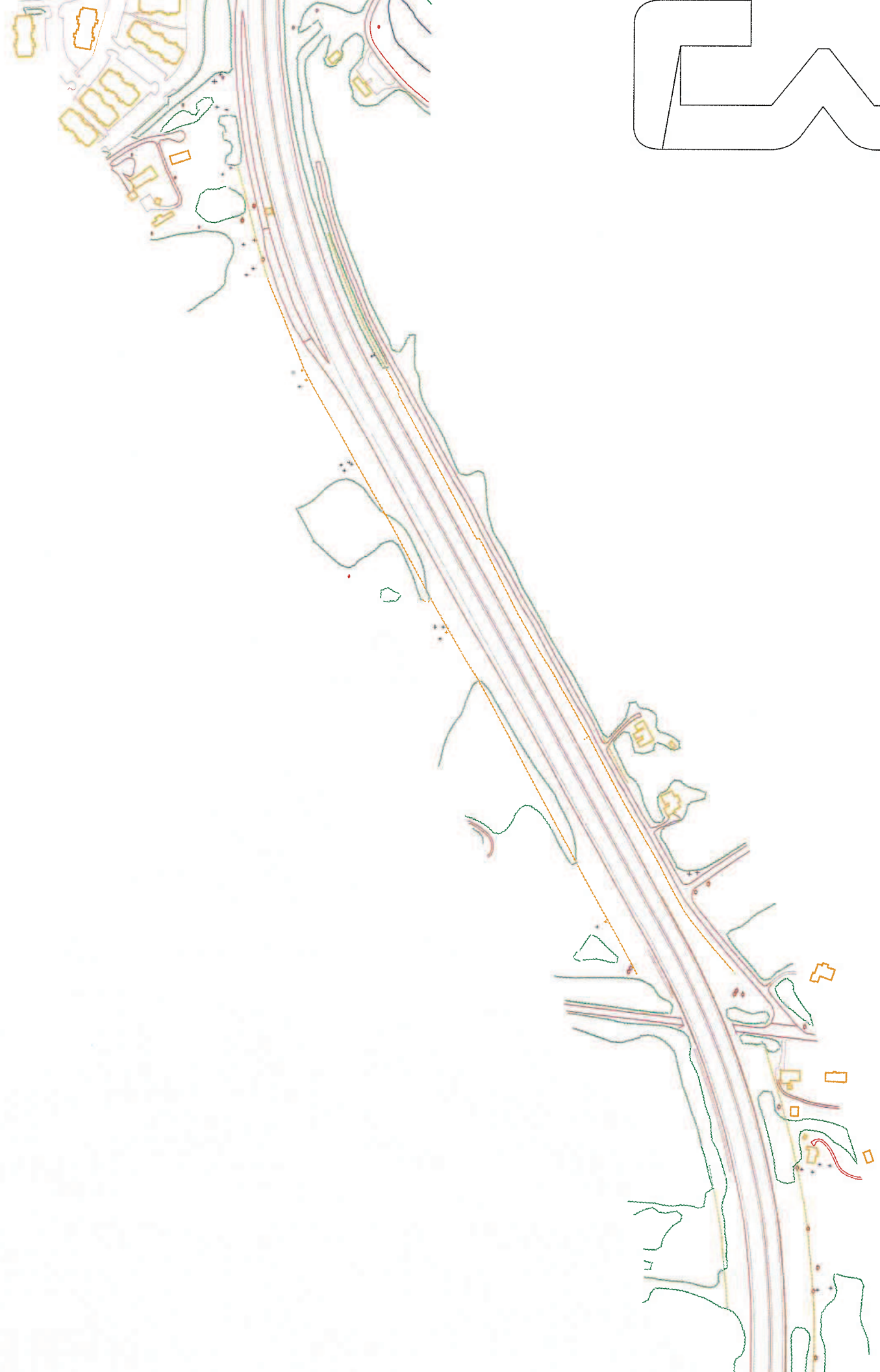
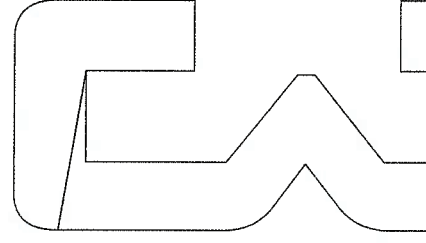
Notes I-385 & I-85 Interchange Improvements
I-385 Woodruff Road (SC146 Exit # 35 to Roper Mt Road (S183 Exit # 37)
I-85 Woodruff (SC146 Exit #50) to Pelham Road (S492 Exit # 54)











South Carolina Department of Transportation
Reconfiguration of I-385 Interchange with I-85, Conceptual Plans
Greenville County, SC

CONCEPTUAL UTILITY REPORT, Updated

The Project consists of improvements to the I-85/I-385 Interchange in Greenville County. Modifications to this interchange impacts the adjacent interchanges in all four directions. These interchanges include the I-385 interchanges with Woodruff Road (SC-146 – Exit 35) and Roper Mountain Road (S-183 – Exit 37) and the I-85 Interchanges with Woodruff Road (SC-146 – Exit 50) and Pelham Road (Road S-492 – Exit 54). The first phase is completed and consisted of traffic analysis, alternative conceptual designs, and an overview of potential impacts of the alternatives. Information about major utilities in the area was gathered as part of this phase of work in order to identify potential major conflicts/impacts so that they can be included in the analysis of the conceptual alternatives and addressed in the cost estimates if conflicts are unavoidable.

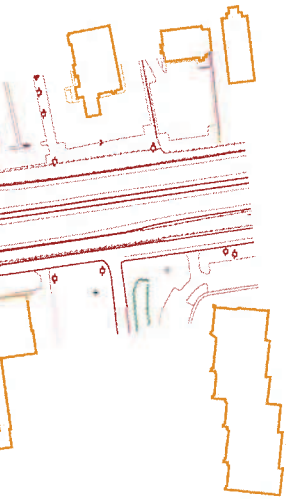
SCDOT has decided to change the delivery method of this project from “Design/Bid/Build to “Design/Build”. With this decision, SCDOT has revised the Utility Coordination scope of work to update existing/current utility contact information and new/proposed utility facilities. Arrangements were made to contact each utility owner contact to provide an update to the Project conceptual plan, Design/Build method, Project schedule and verify utility information. On November 21, 2012 the Greenville Area Utilities Coordinating Committee held their monthly meeting and Gus Kretschmer (LPA GROUP) and Clint Link (F&H) presented Project information; verify existing contacts and existing/proposed utility facilities.

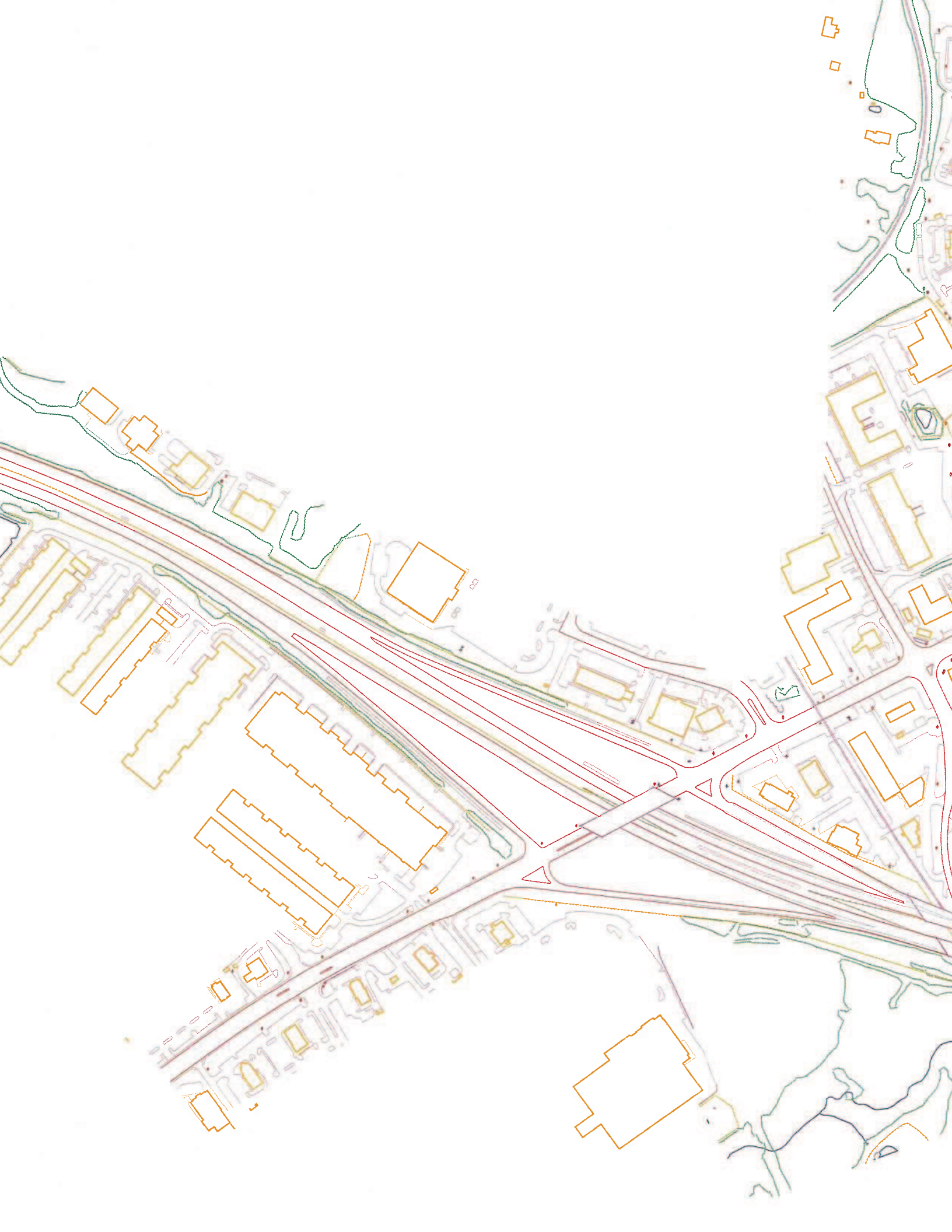
All utilities have reviewed the Project Public Hearing Exhibit and found that existing utility facilities are correct and no additions since the SUE was completed and no proposed/future facilities are planned at this time.

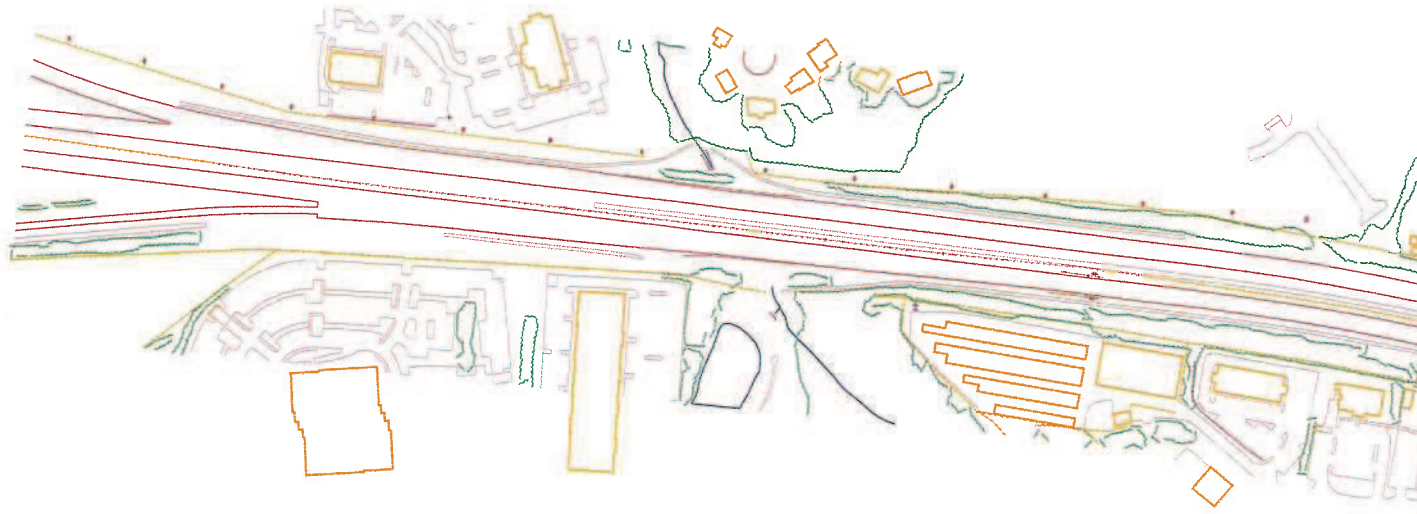
Attached is the updated utility owner contact list current as of November 21, 2012.

1992 11/11/92









PRELIMINARY UTILITY REPORT, UTILITY INFORMATION

Type: Electric Distribution

Utility: Duke Energy

Contact: Thomas A Ramsay
808 Duncan Reidsville Road
Duncan, SC
864.439.5919
taramsay@duke-energy.com

Existing Facility: Aerial electric distribution and underground distribution services

Prior Rights: Partial, residual Right of Way and easement for distribution poles and lines along Woodruff Road.

Impact: No poles and lines inside I-85 and I-385 Controlled Access Right of Way except for I-85 crossing south of I-385 interchange. Poles and lines located with service and secondary roads are from 5 to 20 feet from edge of existing pavement.

Relocation: YES, lines crossing I-85 and I-385 will have to be adjusted for vertical clearance. Poles and lines along secondary and service roads will need to be relocated for vertical, horizontal realignment and new roads to comply with Clear Zone requirements.

Future Facility: NONE

Restrictions and/or Moratoriums: NONE

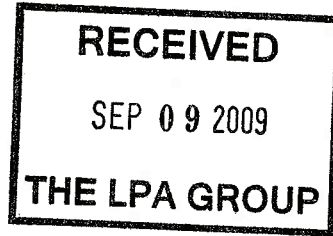
Notice to Proceed:

Estimated Time to Relocate:

In-Contract Work: NO, electric distribution facilities are proprietary and not typical roadway construction work. A recommendation is to include “clearing” in Prime Contractor work to cooperate with relocation plan and reduce relocation cost.



DUKE ENERGY CAROLINAS
808 Duncan-Reidville Road
Duncan, SC 29334



August 31, 2009

The LPA Group of North Carolina, PA
5600 77 Center Drive, Suite 200
Charlotte, N.C. 28217

SUBJECT: I-85 & I-385 INTERCHANGE

I have attached a sketch showing the approximate locations of Duke Energy's overhead power distribution lines in the vicinity of the intersection of Hwy I-385 and Interstate I-85. Please keep in mind that there are also underground power distribution systems emanating from these overhead lines. The underground power distribution lines provide electrical service to the myriad commercial business in this area.

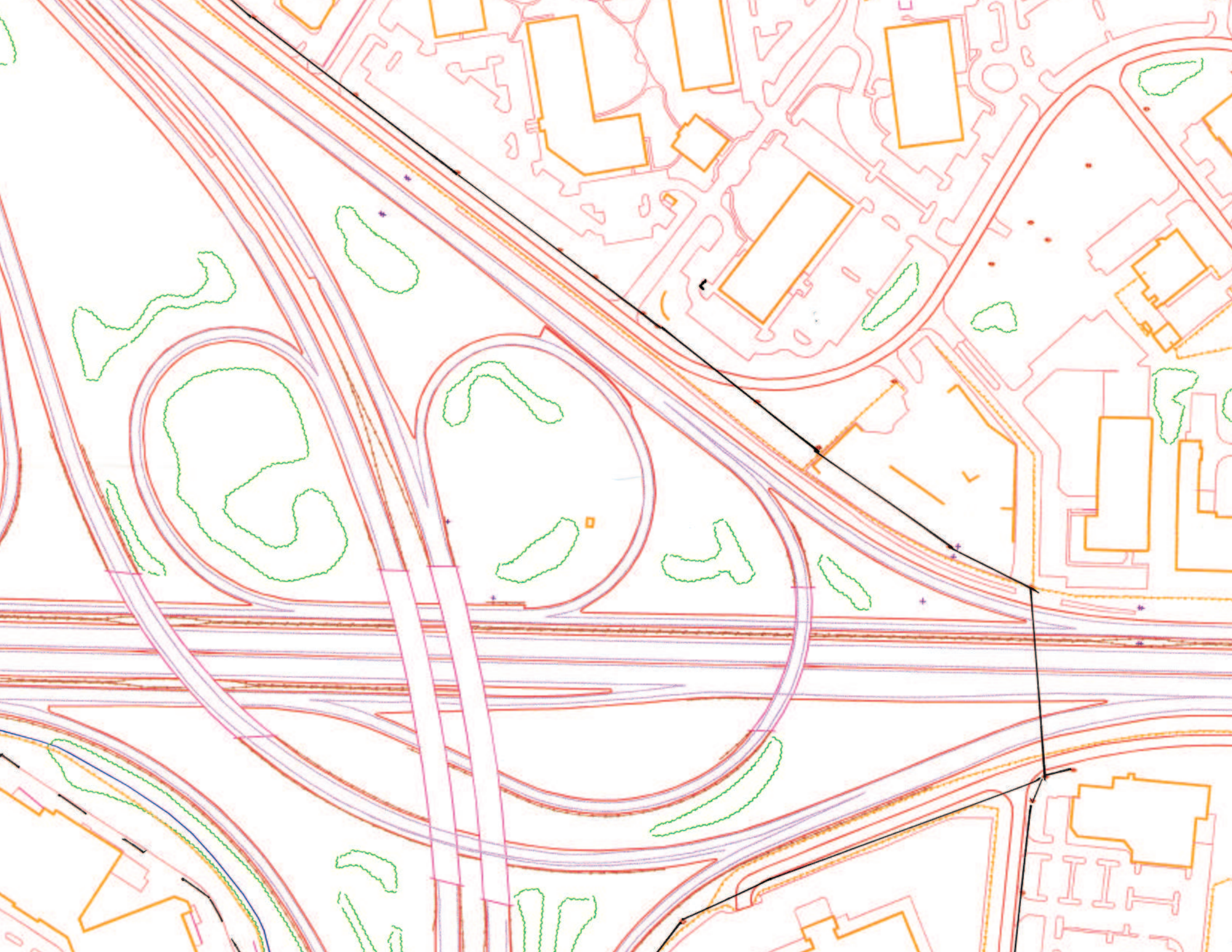
Based on the fact that there were electrical customers along Woodruff road prior to the construction of the interstate road system, Duke Energy will possess some residual rights of way and easements for the existing facilities. These will have to be considered in light of any DOT encroachments that are involved. At such time as Duke Energy receives an official request from the SCDOT, we can provide more detailed information.

If you have any questions, please contact me.

A handwritten signature in black ink that reads 'Thomas A. Ramsay'. The signature is fluid and cursive, with a long horizontal stroke extending to the right.

THOMAS A. RAMSAY
DUKE ENERGY

taramsay@duke-energy.com
864-439-5919



South Carolina Department of Transportation
Reconfiguration of I-385 Interchange with I-85, Conceptual Plans
Greenville County, SC

PRELIMINARY UTILITY REPORT, UTILITY INFORMATION

Type: Telecommunications

Utility: Charter Communications

Contact: Derry Rollins
2 Digital Place
Simpsonville, SC 29681
864.809.0379
drollins@chartercom.com

Existing Facility: Aerial and underground Cable TV and internet distribution services

Prior Rights: NONE, aerial lines joint use with Duke Energy and underground lines inside public Right of Way.

Impact: No lines inside I-85 and I-385 Controlled Access Right of Way except for I-85 crossing south of I-385 interchange. Lines located with service and secondary roads are from 3 to 10 feet from edge of existing pavement.

Relocation: YES, lines crossing I-85 and I-385 will have to be adjusted for vertical clearance. Lines along secondary and service roads will need to be relocated for vertical, horizontal realignment and new roads to comply with Clear Zone requirements.

Future Facility: NONE

Restrictions and/or Moratoriums: NONE

Notice to Proceed:

Estimated Time to Relocate:

In-Contract Work: NO, Cable TV and internet facilities are proprietary and not typical roadway construction work.

REQUEST FOR UTILITY INFORMATION

Project Description: I-85 & I-385 Interchange Reconfiguration Study

SCDOT Project File Number: Greenville County

SCDOT Federal Aid Project Number:

UTILITY COMPANY: CHARTER COMMUNICATIONS

CONTACT PERSON: DERRY ROLLINS

ADDRESS: 2 DIGITAL PLACE
SIMPSONVILLE SC 29681

PHONE & FAX: (864) 809 0379

EMAIL: drollins@chartercom.com

DESCRIBE UTILITY FACILITIES WITHIN AND NEAR PROJECT LIMITS: SEE ENCLOSED

PROPERTY INTEREST IN PRESENT LOCATION: PRIOR RIGHTS ?

1. YES IF YES, (FEE SIMPLE _____ EASEMENT _____ OTHER Joint Use)

2. NO _____ (Encroachment by permit on SCDOT Right of Way)

PLANS:

1. Are as-builts available of present facilities? Yes No _____

2. What format will you want project design information presented on?

Electronic Drawing Files in Microstation Format _____

Paper plans



June 29, 2009

**To: Gus Kretschmer
Utility Relocation Manager
The LPA Group of North Carolina, P.A.
5600 77 Center Drive , Suite 200
Charlotte, NC 28217**

**From: Derry Rollins
Project Coordinator
Charter Communications
2 Digital Place
Simpsonville, SC 29681**

Re: I-85 & I-385 Interchange Reconfiguration Study

After reviewing the site boundaries of the proposed project, Charter Communications will have facilities in the areas as shown on the enclosed drawings.

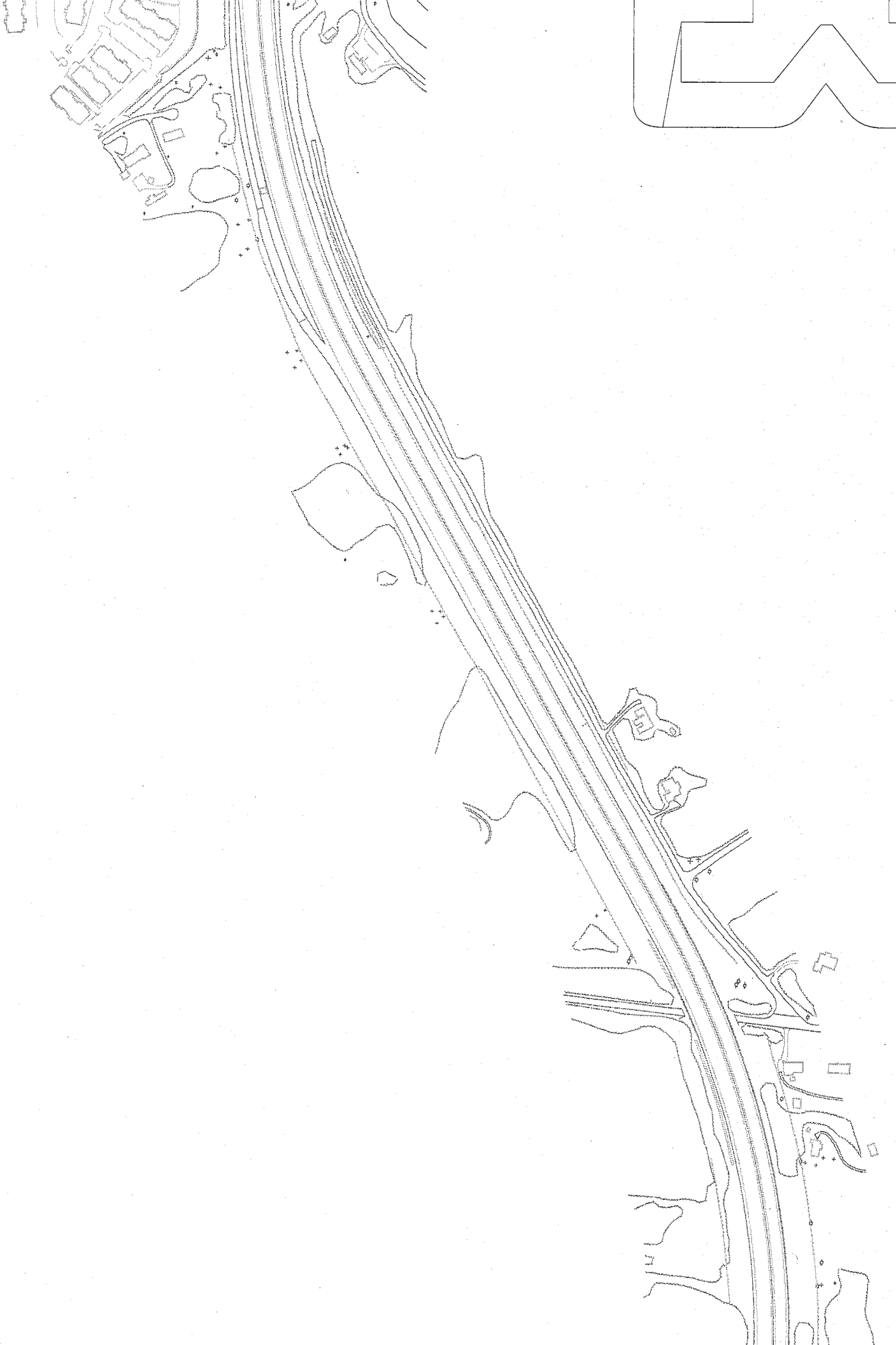
Any questions give me a call at (864) 254-7342 office or (864) 809-0379 cell.

Thank you,

**Derry Rollins
Project Coordinator**



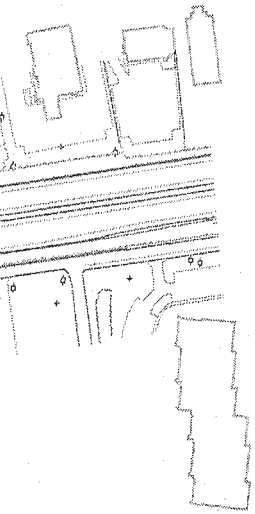


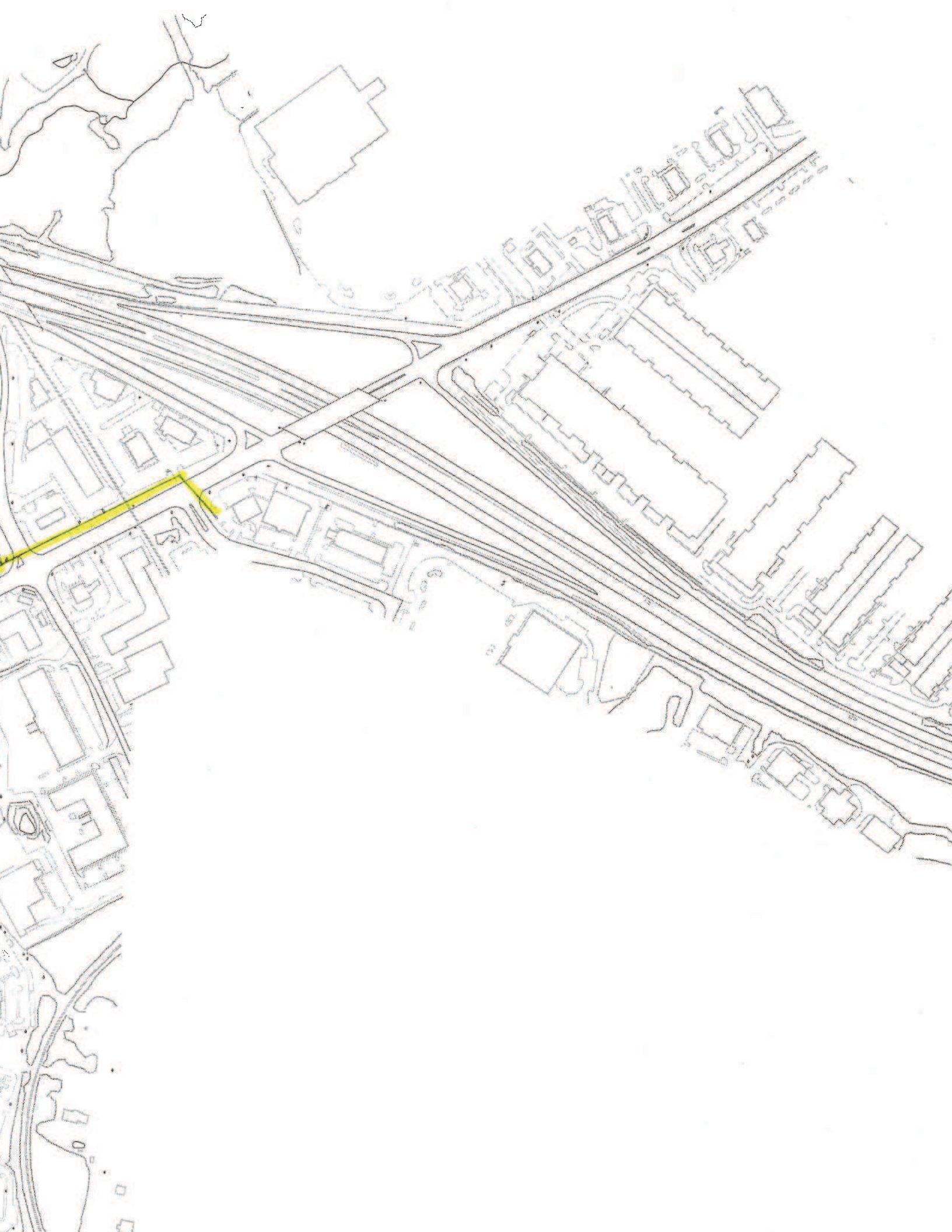


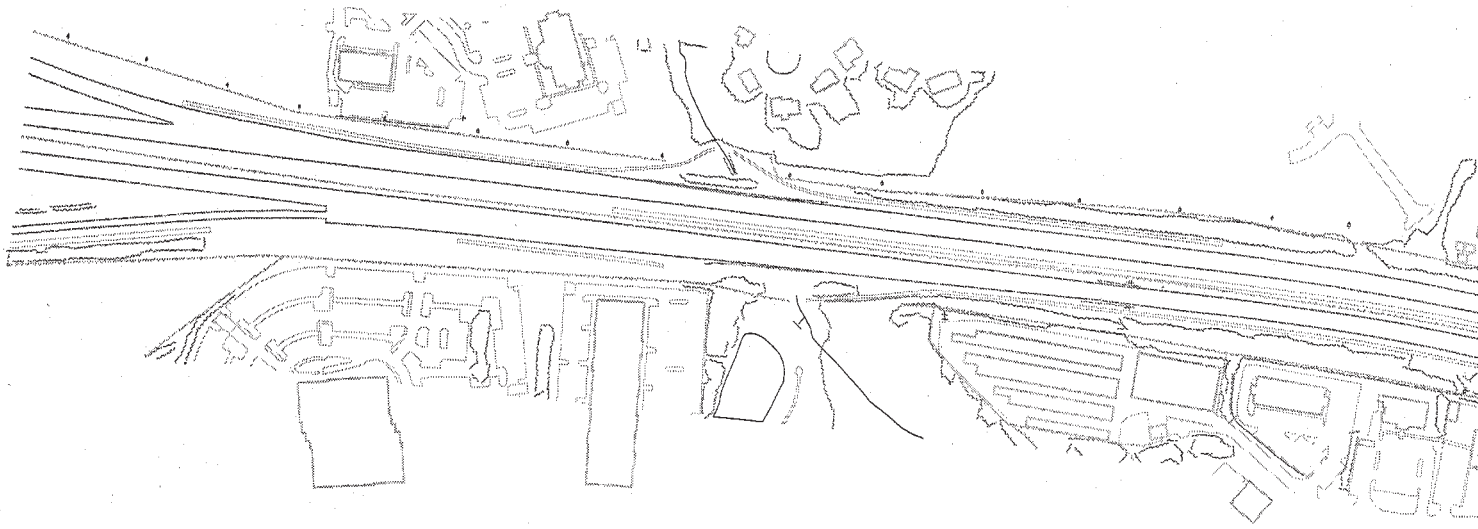


Handwritten scribbles or marks at the top of the page.









South Carolina Department of Transportation
Reconfiguration of I-385 Interchange with I-85, Conceptual Plans
Greenville County, SC

PRELIMINARY UTILITY REPORT, UTILITY INFORMATION

Type: Telecommunications

Utility: AT&T (BellSouth)

Contact: Bryant Oakley
864.298.0747
Bryant.oakley@att.com

Existing Facility: Aerial and underground telecommunications distribution and service lines

Prior Rights: NONE, aerial lines joint use with Duke Energy and underground lines inside public Right of Way.

Impact: No lines inside I-85 and I-385 Controlled Access Right of Way except for I-85 crossing south of I-385 interchange. Lines located with service and secondary roads are from 3 to 10 feet from edge of existing pavement.

Relocation: YES, lines crossing I-85 and I-385 will have to be adjusted for vertical clearance. Lines along secondary and service roads will need to be relocated for vertical, horizontal realignment and new roads to comply with Clear Zone requirements.

Future Facility: NONE

Restrictions and/or Moratoriums: NONE

Notice to Proceed:

Estimated Time to Relocate:

In-Contract Work: NO, telecommunications facilities are proprietary and not typical roadway construction work.

South Carolina Department of Transportation
Reconfiguration of I-385 Interchange with I-85, Conceptual Plans
Greenville County, SC

PRELIMINARY UTILITY REPORT, UTILITY INFORMATION

Type: Water

Utility: Greenville Water System (GWS)

Contact: Murray Dodd
407 West Broad Street
Greenville, SC 29602
mdodd@greenvillewater.com

Existing Facility: Water distribution and service lines

Prior Rights: None, distribution and service lines in public Right of Way.

Impact: Minor, no lines inside I-85 and I-385 Controlled Access Right of Way. Distribution and service lines located with service and secondary roads at 3 to 10 foot depths.

Relocation: None, lines stay in place, adjusted above ground appurtenances (valves, meters, fire hydrants, etc.) for vertical and horizontal realignments.

Future Facility: NONE

Restrictions and/or Moratoriums: NONE

Notice to Proceed:

Estimated Time to Relocate:

In-Contract Work: YES, water distribution and services facilities work compatible with general contractor using sub-contractor to perform gravity and force main sanitary sewer construction.

South Carolina Department of Transportation
Reconfiguration of I-385 Interchange with I-85, Conceptual Plans
Greenville County, SC

PRELIMINARY UTILITY REPORT, UTILITY INFORMATION

Type: Sanitary Sewer

Utility: Renewable Water Resources (ReWa)

Contact: Hagan "Festus" Stroud
670 Mauldin Road
Greenville, SC 29607
864.299.4771
festuss@re-wa.org

Existing Facility: Gravity Sanitary Sewer and Force Main Sanitary Sewer

Prior Rights: Partial, Collector Gravity SS in public Right of Way and Force Main SS in easements.

Impact: Minor, no lines inside I-85 and I-385 Controlled Access Right of Way except for one crossing north of Roper Mountain Road. Gravity SS lines located with service and secondary roads at 6 to 10 foot depths.

Relocation: None, lines stay in place, manholes adjusted for vertical and extend casing of line crossing I-85 north of Roper Mountain Road for widening of I-85.

Future Facility: NONE

Restrictions and/or Moratoriums: NONE

Notice to Proceed:

Estimated Time to Relocate:

In-Contract Work: YES, sewer line work compatible with general contractor using sub-contractor to perform gravity and force main sanitary sewer construction.

REQUEST FOR UTILITY INFORMATION

Project Description: I-85 & I-385 Interchange Reconfiguration Study

SCDOT Project File Number: Greenville County

SCDOT Federal Aid Project Number:

UTILITY COMPANY: RENEWABLE WATER RESOURCES (REWA)

CONTACT PERSON: RAGAN "FESTUS" STROUD

ADDRESS: 670 MAULDIN RD:
GREENVILLE, SC. 29607

PHONE & FAX: (864) 299-9741

EMAIL: FESTUSS@RE-WARE.COM

DESCRIBE UTILITY FACILITIES WITHIN AND NEAR PROJECT LIMITS: SEWER FORCE MAIN & GRAVITY SEWER

PROPERTY INTEREST IN PRESENT LOCATION: PRIOR RIGHTS ?

1. YES IF YES, (FEE SIMPLE EASEMENT OTHER)

2. NO (Encroachment by permit on SCDOT Right of Way)

PLANS:

1. Are as-builts available of present facilities? Yes No

2. What format will you want project design information presented on?

Electronic Drawing Files in Microstation Format

Paper plans



[ABOUT US](#)

[CUSTOMER SERVICE](#)

[ENVIRONMENT](#)

[PURCHASING](#)

[ENGINEERING](#)

[COMMUNITY](#)



CONTACT US



[Employment](#)

In case of a sewer-related emergency, please dial 864-299-4004, 24 hours a day, seven days a week.

 [Check out Freshwater Freddie's Blog](#)

[Procurement Projects](#)

Address:
561 Mauldin Road
Greenville, SC 29607

 [Water Conservation](#)

[Kid's Page](#)

Customer Service: 864-299-0260

 [Notice of Public Hearing](#)

[Forms/Applications](#)

Tours/Speakers Bureau: 864-299-4040 Ext. 312

 [Commission Meeting](#)

[Upstate Roundtable](#)

For department descriptions, click on the department name:

 [Sewer Use Regulation](#)

[Industrial Users](#)

Administration: 299-4000

 [Annual Report](#)

Accounting: 299-4036

 [CAFR](#)

Collection System: 299-4033

Customer Service: 299-0260

Engineering: 299-4020

Finance: 299-4000

Human Resources: 299-4009

Information Systems: 299-4040

Laboratory: 299-4040

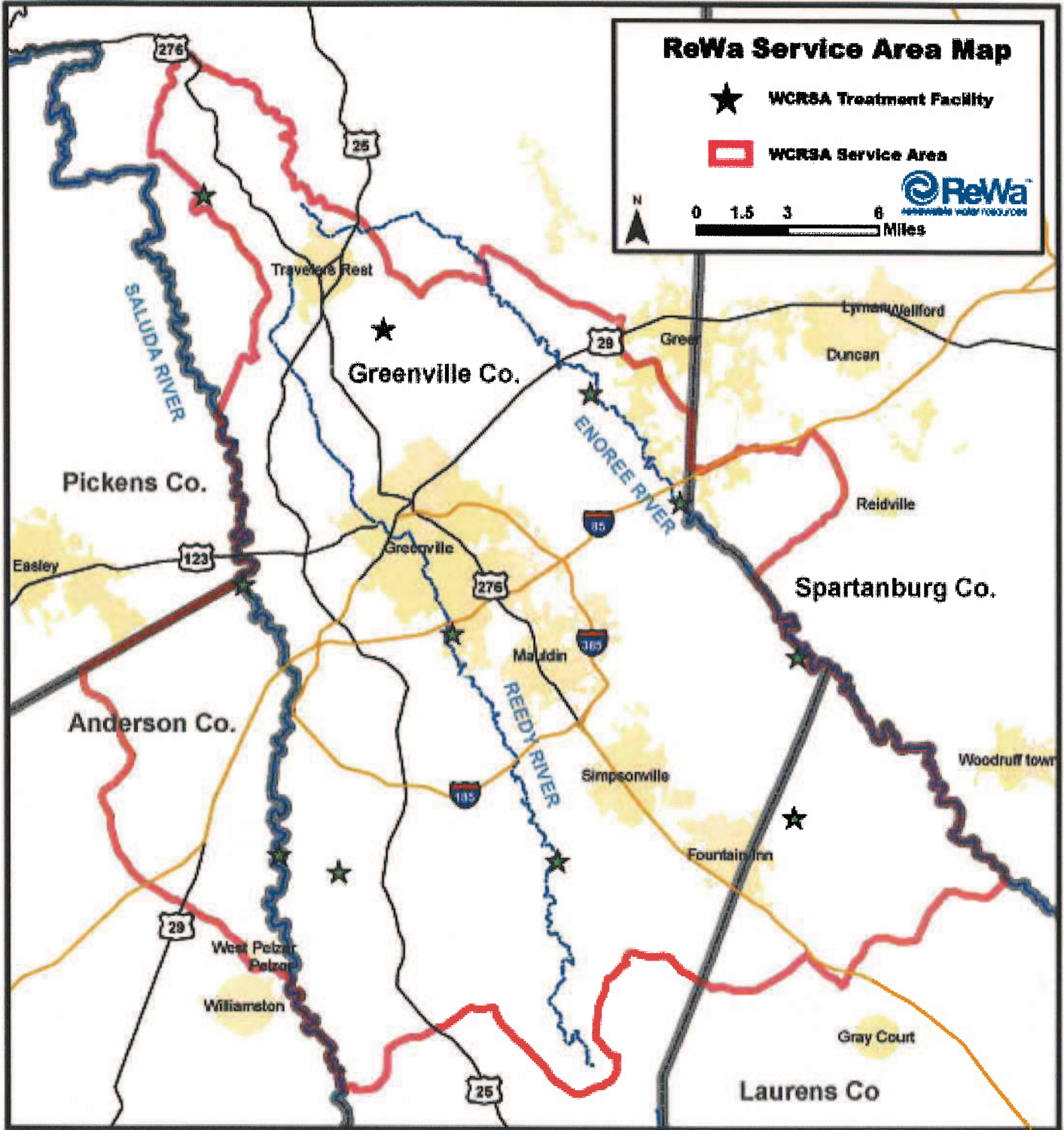
Maintenance Shop: 299-4050

Operations: 299-4040

Pretreatment: 299-4040

Purchasing: 299-4000

Solids Management: 299-4040



ReWa Service Area Map

★ WCRSA Treatment Facility

▭ WCRSA Service Area



0 1.5 3 6 Miles

Pickens Co.

Greenville Co.

Spartanburg Co.

Anderson Co.

Laurens Co

SALUDA RIVER

ENOREE RIVER

REEDY RIVER

Travelers Rest

Greenville

Lynchburg/Jefford

Duncan

Reidville

Easley

Mauldin

Simpsonville

Fountain Inn

Woodruff town

West Pelzer
Pelzer

Williamston

Gray Court

276

25

28

123

276

29

25

95

195

195

South Carolina Department of Transportation
Reconfiguration of I-385 Interchange with I-85, Conceptual Plans
Greenville County, SC

PRELIMINARY UTILITY REPORT, UTILITY INFORMATION

Type: Sanitary Sewer

Utility: Metropolitan Sewer District (MSD)

Contact: Rick Riddle or Carol Elliott
120 Augusta Arbor Way
Greenville, SC 29605
864.277.4442
rriddle@mssd-gvl.com

Existing Facility: Gravity Sanitary Sewer and Force Main Sanitary Sewer

Prior Rights: Partial, Collector Gravity SS in public Right of Way and Force Main SS in easements.

Impact: Minor, no lines inside I-85 and I-385 Controlled Access Right of Way. Gravity SS lines located with service and secondary roads at 6 to 10 foot depths.

Relocation: None, lines stay in place, manholes adjusted for vertical.

Future Facility: NONE

Restrictions and/or Moratoriums: NONE

Notice to Proceed:

Estimated Time to Relocate:

In-Contract Work: YES, sanitary sewer line work compatible with general contractor using sub-contractor to perform gravity and force main sanitary sewer construction.

REQUEST FOR UTILITY INFORMATION

Project Description: I-85 & I-385 Interchange Reconfiguration Study

SCDOT Project File Number: Greenville County

SCDOT Federal Aid Project Number:

UTILITY COMPANY: Metropolitan Sewer District

CONTACT PERSON: Rick Riddle or Carol Elliott

ADDRESS: 120 Augusta Ave. W. Hwy
Greenville SC 29605

PHONE & FAX: (864) 277-4442

EMAIL: RRiddle@mssd-gvl.com

DESCRIBE UTILITY FACILITIES WITHIN AND NEAR PROJECT LIMITS: Yes, underground facilities

PROPERTY INTEREST IN PRESENT LOCATION: PRIOR RIGHTS ?

1. YES IF YES, (FEE SIMPLE EASEMENT OTHER)
2. NO (Encroachment by permit on SCDOT Right of Way)

PLANS:

1. Are as-builts available of present facilities? Yes No
2. What format will you want project design information presented on? G15
Electronic Drawing Files in Microstation Format
Paper plans

STATE OF SOUTH CAROLINA)
)
)
)
COUNTY OF GREENVILLE) RELEASE AGREEMENT FOR DIGITAL
) MAP DATA FROM THE CITY OF GREENVILLE'S
) GIS DEPARTMENT
) C98-37

I, GUS KRETSCHMER of THE LPA GROUP of North Carolina, p.a.

for and in consideration of the City of Greenville's distribution of the following digital map data:

I-85 & I-385 Interchange area including interchanges with Woodruff Road (SC146 I-385 Exit 35), Roper Mountain Road (S183 I-385 Exit 37), Woodruff Road (SC146 I-85 Exit 50), Pelham Road (S492 I-85 Exit 54) for sanitary sewer and storm water drainage

hereby fully and forever releases, quits, and discharges the City of Greenville and any of its agents or employees from any and all actions, claims, and demands of whatsoever kind or nature on account of any and all known injuries, losses, and damages arising directly or indirectly from the digital map data provided by the City, now and in the future.

I FURTHER DECLARE and understand that the digital map data provided to me may not be distributed or sold in part, or entirety, for use by another third party.

I FURTHER DECLARE and understand that all floodplain data is derived from graphic interpretations performed by the City of Greenville GIS Division. The Fldway.shp is derived from hardcopy FEMA maps and the Floodstudy.shp is derived from an external flood study performed by Woolpert.

I FURTHER DECLARE and represent that the digital map data provided to me will be used for the following purposes:

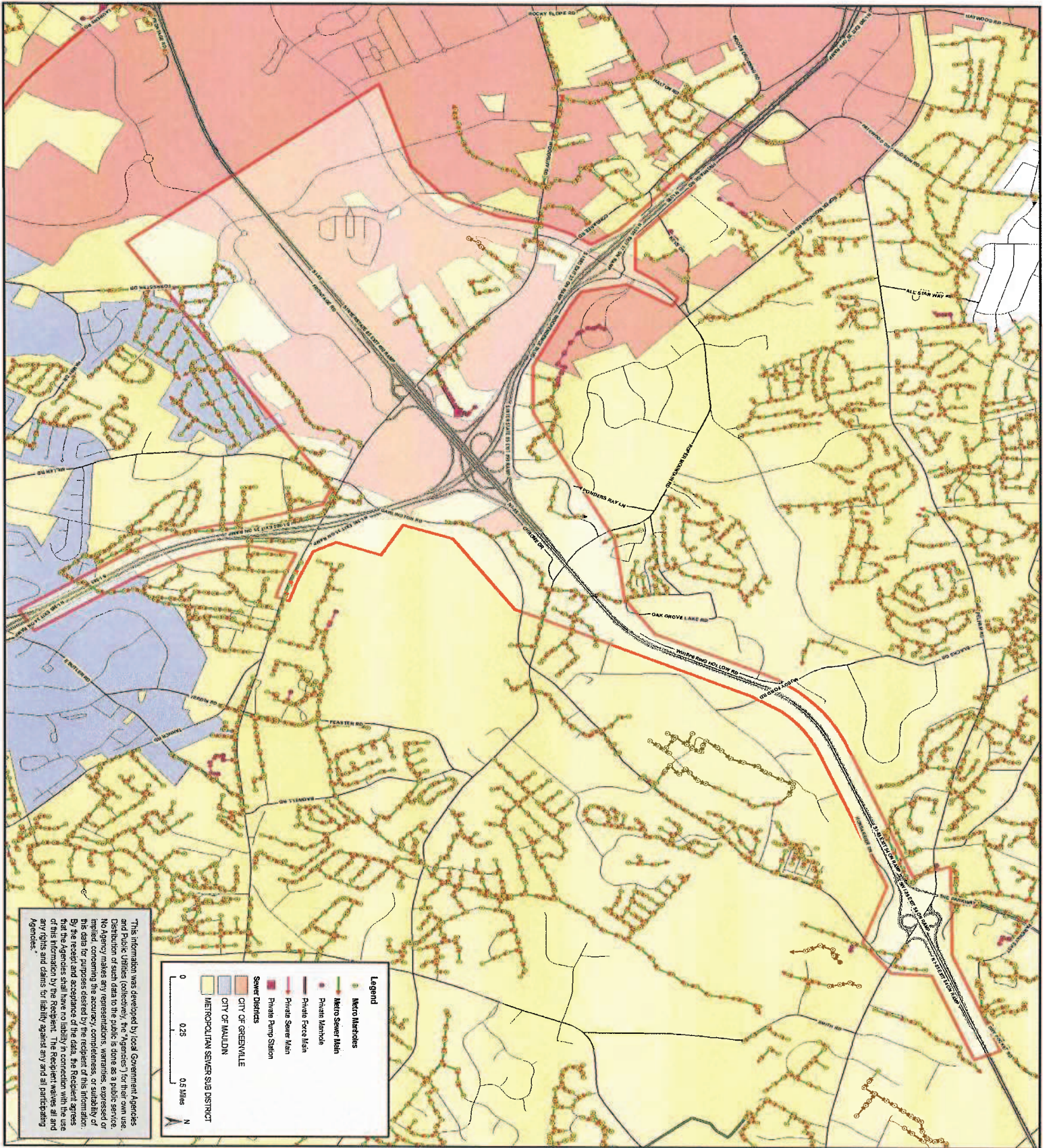
To identify major utilities and utility easements for development of preliminary Build Alternatives, identify potential impacts to utility facilities, recommendation of remediation of conflicts and formulation of relocation cost estimate

I FURTHER STATE that this Release Agreement is freely and voluntarily given; and I have carefully read the foregoing release and know the contents thereof and that I sign it as my own free act.

IN WITNESS WHEREOF, I have hereunto set my hand and seal on the 15th day of July, 2009

WITNESSES:
Carissa Patterson
James B. Layton III

THE LPA GROUP OF North Carolina
NAME OF COMPANY
BY: Gus Kretschmer
SIGNATURE
ITS: UTILITY RELOCATION MANAGER
TITLE



"This information was developed by local Government Agencies and Public Utilities (collectively, the "Agencies") for their own use. Distribution of such data to the public is done as a public service. No Agency makes any representations, warranties, expressed or implied, concerning the accuracy, completeness, or suitability of this data for purposes created by the recipient of this information. By the receipt and acceptance of the data, the recipient agrees to indemnify and hold the Agencies harmless from and against all and any claims and claims for liability against any and all participating Agencies."

Legend

- Metro Interlocks
- Metro Sewer Main
- Private Sewer Main
- Private Sewer Main
- Private Sewer Main
- Private Pump Station

Sewer Districts

- CITY OF MALLDIN
- CITY OF GREENVILLE
- METROPOLITAN SEWER DISTRICT

0 0.25 0.5 Miles N

South Carolina Department of Transportation
Reconfiguration of I-385 Interchange with I-85, Conceptual Plans
Greenville County, SC

PRELIMINARY UTILITY REPORT, UTILITY INFORMATION

Type: Natural Gas Distribution

Utility: Piedmont Natural Gas

Contact: Carlos Roper
Carlos.roper@piedmontng.com

Existing Facility: Plastic natural gas distribution and service lines

Prior Rights: Lines inside public Right of Way.

Impact: No lines inside I-85 and I-385 Controlled Access Right of Way except for line crossing south of Roper Mountain Road and I-385 interchange. Lines located with service and secondary roads are from 3 to 10 feet from edge of existing pavement.

Relocation: YES, Lines along secondary and service roads will need to be relocated for vertical, horizontal realignment and new roads to comply with Clear Zone requirements.

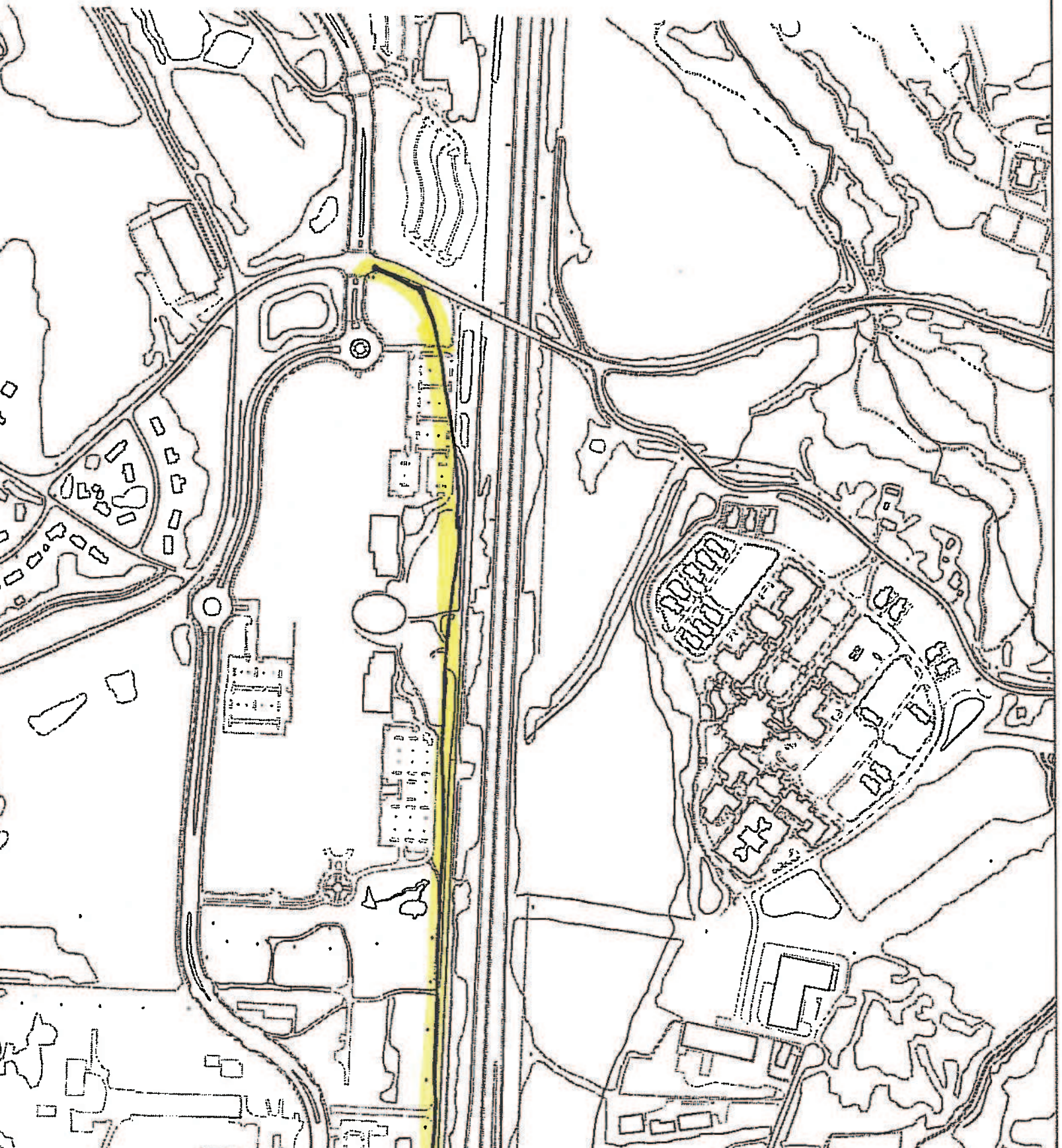
Future Facility: NONE

Restrictions and/or Moratoriums: NONE

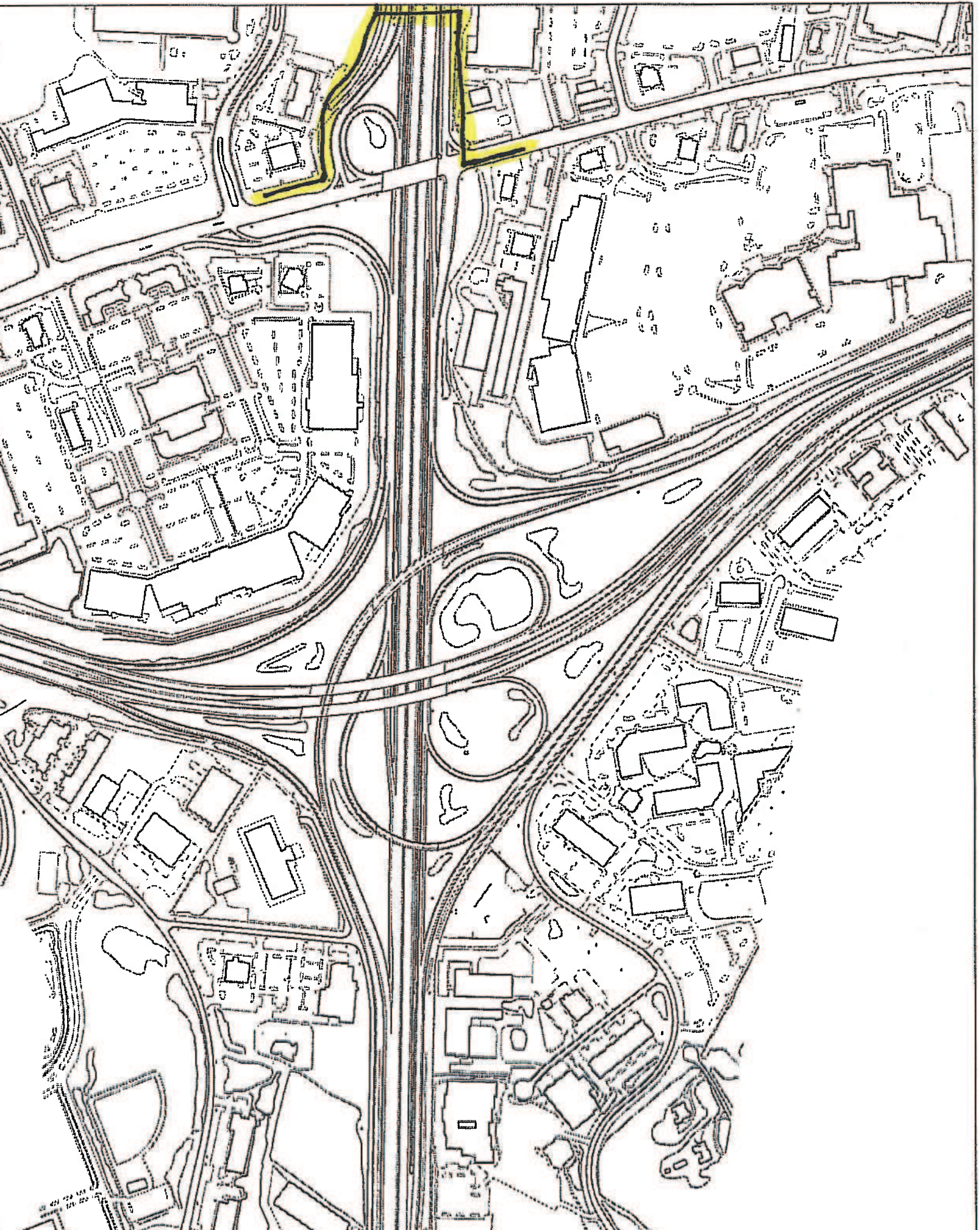
Notice to Proceed:

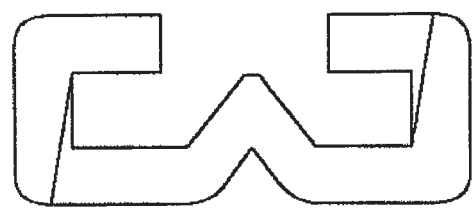
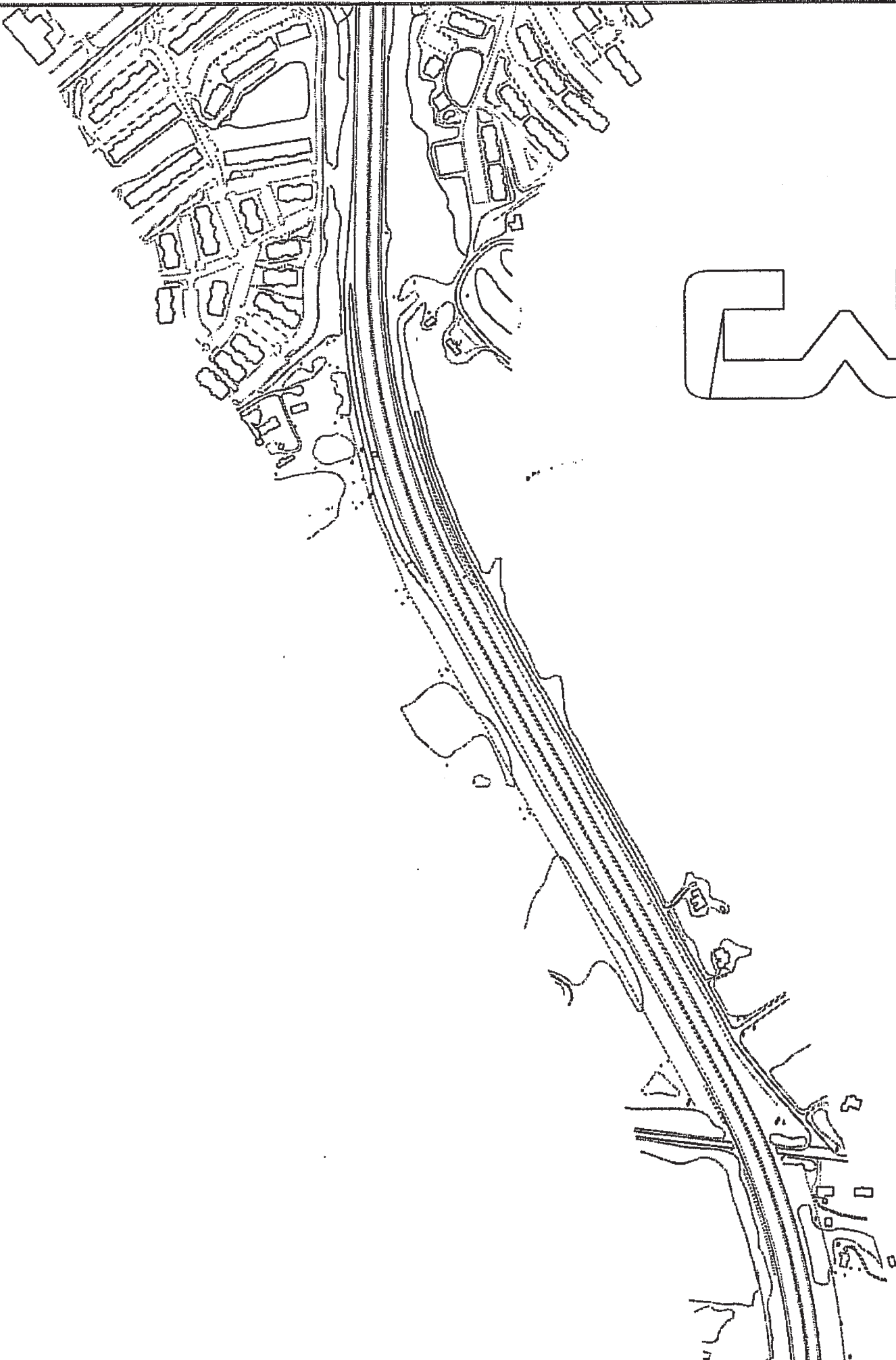
Estimated Time to Relocate:

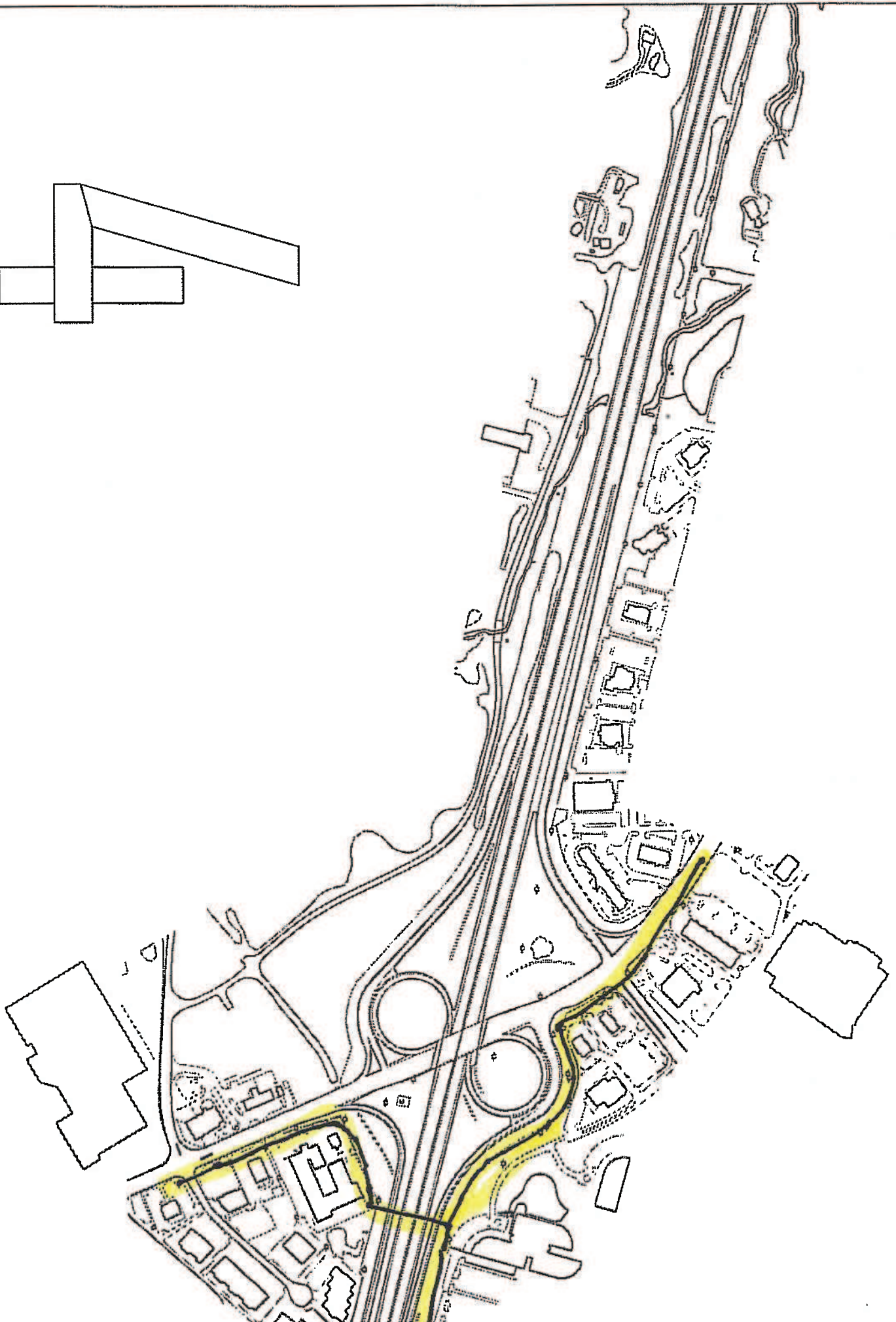
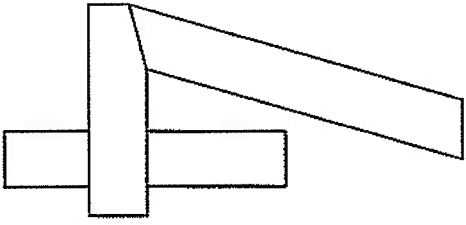
In-Contract Work: NO, natural gas facilities are proprietary and not typical roadway construction work.

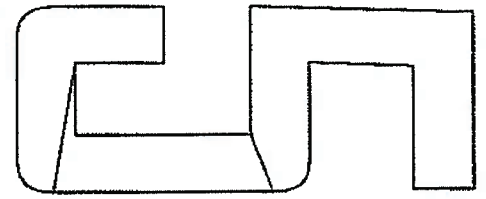
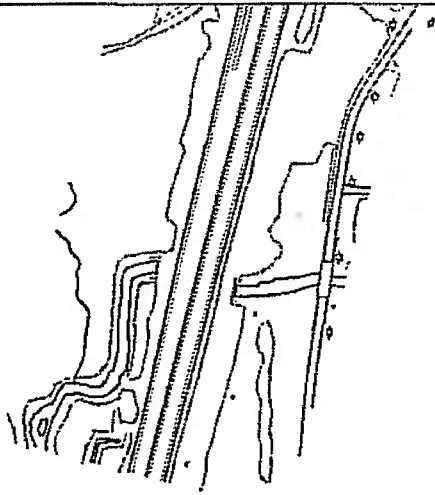


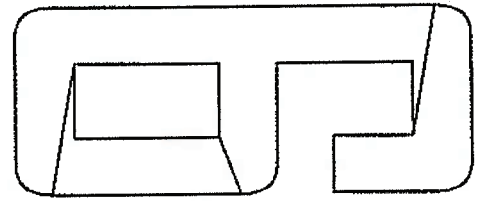
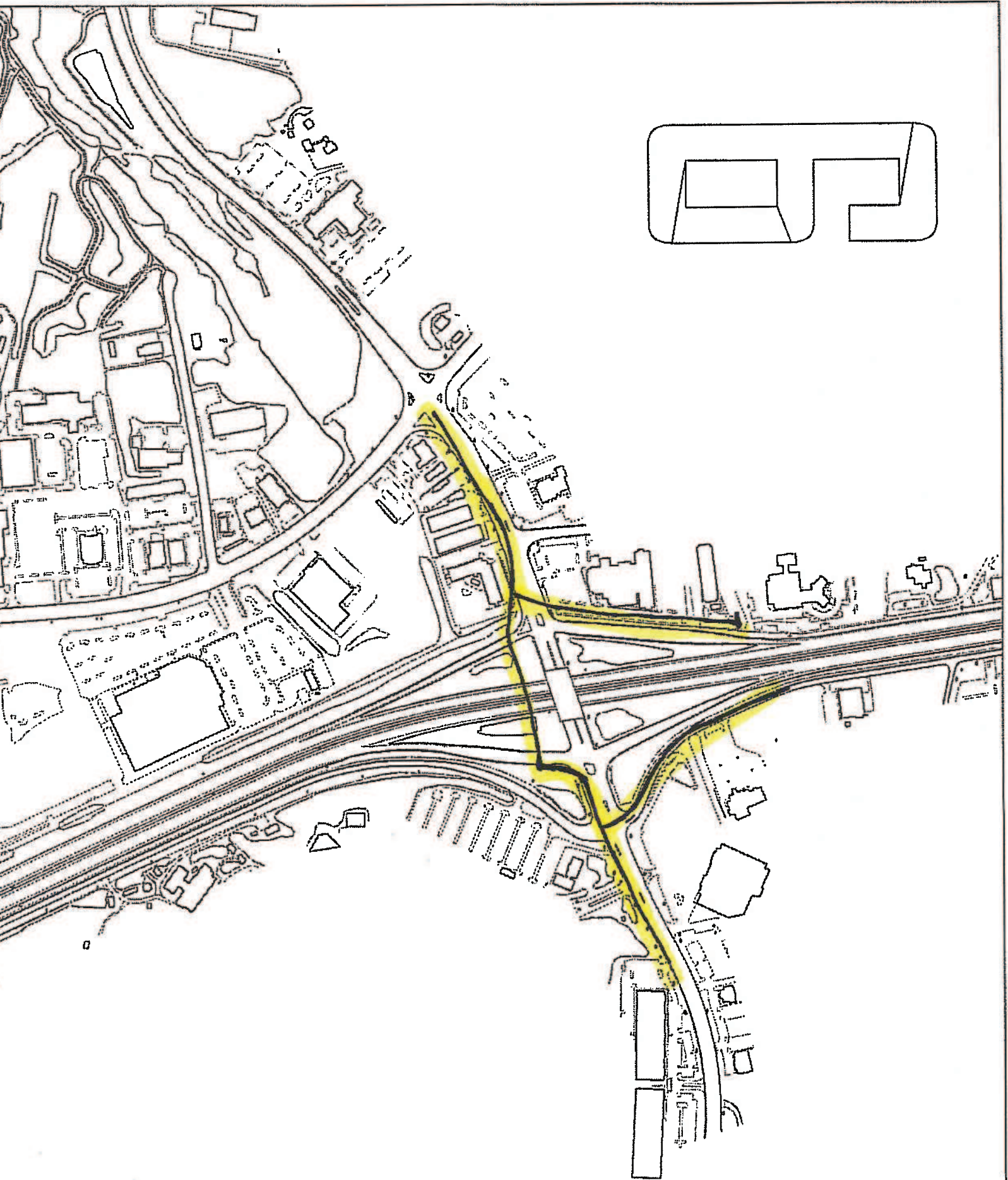
1. The Director / ...

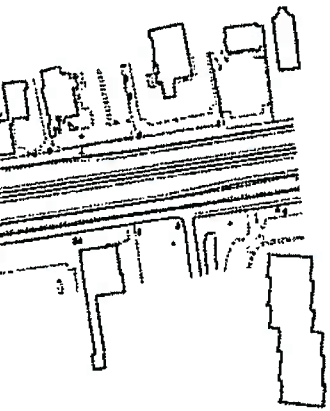
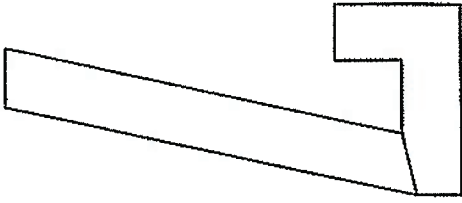


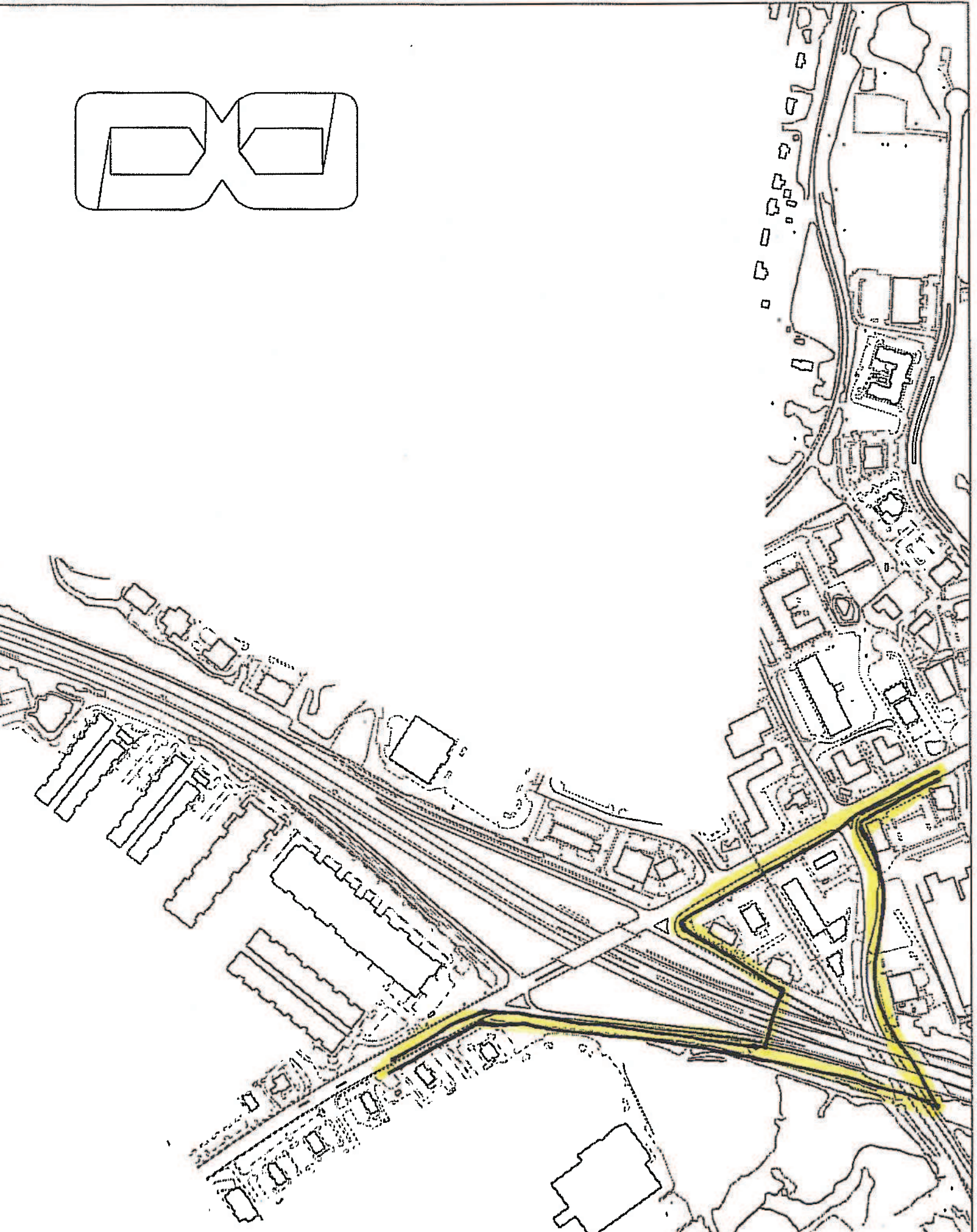
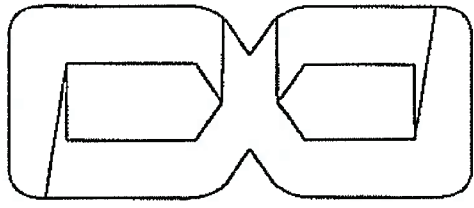


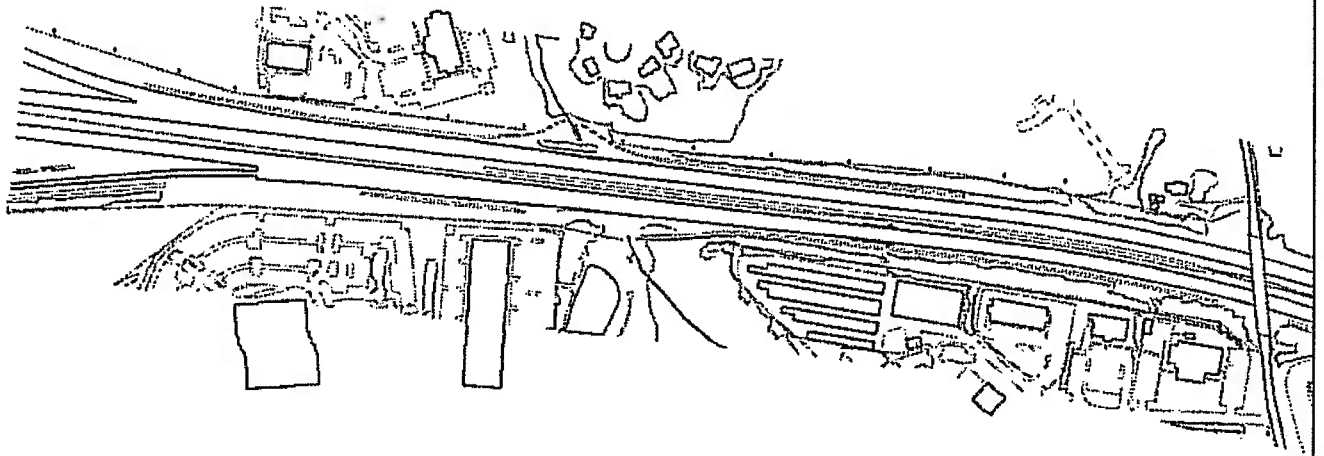
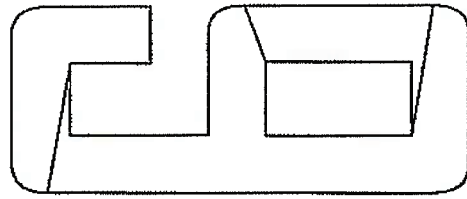












REQUEST FOR UTILITY INFORMATION

Project Description: I-85 & I-385 Interchange Reconfiguration Study

SCDOT Project File Number: Greenville County

SCDOT Federal Aid Project Number:

UTILITY COMPANY: BEREA PUBLIC SERVICE DISTRICT

CONTACT PERSON: GEORGE ANSON

ADDRESS: 7401 WHITE HORSE ROAD
GREENVILLE, SC 29611

PHONE & FAX: (864) 294-4840 294-4838

EMAIL: _____

DESCRIBE UTILITY FACILITIES WITHIN AND NEAR PROJECT LIMITS: _____

NOT IN THIS PROJECT

PROPERTY INTEREST IN PRESENT LOCATION: PRIOR RIGHTS ?

1. YES _____ IF YES, (FEE SIMPLE _____ EASEMENT _____ OTHER _____)

2. NO _____ (Encroachment by permit on SCDOT Right of Way)

PLANS:

1. Are as-builts available of present facilities? Yes _____ No _____

2. What format will you want project design information presented on?

Electronic Drawing Files in Microstation Format _____

Paper plans _____

REQUEST FOR UTILITY INFORMATION

Project Description: I-85 & I-385 Interchange Reconfiguration Study

SCDOT Project File Number: Greenville County

SCDOT Federal Aid Project Number:

UTILITY COMPANY: Laurens County Water + Sewer

CONTACT PERSON: Angie Nelson

ADDRESS: PO Box 1006
Laurens SC 29360

PHONE & FAX: (864) 682-3250 x127

EMAIL: ANelson@LCWSC.com

DESCRIBE UTILITY FACILITIES WITHIN AND NEAR PROJECT LIMITS:

No utilities in or around project Area

PROPERTY INTEREST IN PRESENT LOCATION: PRIOR RIGHTS ?

1. YES _____ IF YES, (FEE SIMPLE _____ EASEMENT _____ OTHER _____)

2. NO (Encroachment by permit on SCDOT Right of Way)

PLANS:

1. Are as-builts available of present facilities? Yes _____ No _____

2. What format will you want project design information presented on?

Electronic Drawing Files in Microstation Format _____

Paper plans _____

REQUEST FOR UTILITY INFORMATION

Project Description: I-85 & I-385 Interchange Reconfiguration Study

SCDOT Project File Number: Greenville County

SCDOT Federal Aid Project Number:

UTILITY COMPANY: GANTT FIRE, SEWER & POLICE DISTRICT

CONTACT PERSON: MIKE STANSELL

ADDRESS: 103 LYDIA STREET
GREENVILLE, SC 29605

PHONE & FAX: (864) 277-7301 FAX (864) 277-7307

EMAIL: gantt.nwcs@charter.net

DESCRIBE UTILITY FACILITIES WITHIN AND NEAR PROJECT LIMITS: NONE - NOT INVOLVED

PROPERTY INTEREST IN PRESENT LOCATION: PRIOR RIGHTS ?

N/A-

- 1. YES IF YES, (FEE SIMPLE EASEMENT OTHER)
- 2. NO (Encroachment by permit on SCDOT Right of Way)

PLANS:

- 1. Are as-builts available of present facilities? Yes No N/A
- 2. What format will you want project design information presented on?
 - Electronic Drawing Files in Microstation Format N/A
 - Paper plans N/A

REQUEST FOR UTILITY INFORMATION

Project Description: I-85 & I-385 Interchange Reconfiguration Study

SCDOT Project File Number: Greenville County

SCDOT Federal Aid Project Number:

UTILITY COMPANY: WADE HAMPTON FIRE & SEWER DIST.

CONTACT PERSON: GARY BUICE

ADDRESS: 4211 E. NORTH ST.
GREENVILLE, SC. 29615

PHONE & FAX: (864) 244-0390 FAX 864-244-7916

EMAIL: buice88@yahoo.com

DESCRIBE UTILITY FACILITIES WITHIN AND NEAR PROJECT LIMITS:

NOT ON THIS PROJECT

PROPERTY INTEREST IN PRESENT LOCATION: PRIOR RIGHTS ?

1. YES IF YES, (FEE SIMPLE EASEMENT OTHER)
2. NO (Encroachment by permit on SCDOT Right of Way)

PLANS:

1. Are as-builts available of present facilities? Yes No
2. What format will you want project design information presented on?
Electronic Drawing Files in Microstation Format
Paper plans

REQUEST FOR UTILITY INFORMATION

Project Description: I-85 & I-385 Interchange Reconfiguration Study

SCDOT Project File Number: Greenville County

SCDOT Federal Aid Project Number:

UTILITY COMPANY: VERIZON SOUTH INC.

CONTACT PERSON: TOM MILLER

ADDRESS: 207 CHURCH ST
LAURENS, SC 29360

PHONE & FAX: (864) 984-6818 984-2902-FAX

EMAIL: tommy.miller@verizon.com

DESCRIBE UTILITY FACILITIES WITHIN AND NEAR PROJECT LIMITS:

NO UTILITIES IN AREA

PROPERTY INTEREST IN PRESENT LOCATION: PRIOR RIGHTS ?

1. YES IF YES, (FEE SIMPLE EASEMENT OTHER)

2. NO (Encroachment by permit on SCDOT Right of Way)

PLANS:

1. Are as-builts available of present facilities? Yes No

2. What format will you want project design information presented on?

Electronic Drawing Files in Microstation Format

Paper plans